



Pop Up S10 Curved

1x3 | 2x3 | 3x3 | 4x3 | 5x3



The traditional magnetic panel backwall! The award winning and intuitive design allows for a toolless set up in no time. This is the high-end solution for portable brand building, over and over again. Available in multiple sizes both curved and straight. Add a Counter Case XL with graphic and LED stem lights to complete your booth package. Can be made double sided as well. Covered by Spennare's Lifetime Warranty.

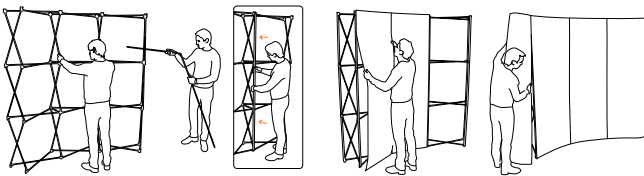
“Best of the best”-Award

Top quality

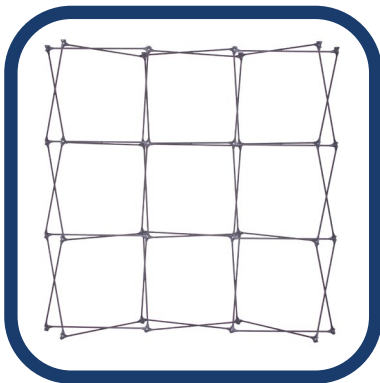
Easy set up



reddot design award
winner



Weight 7 | 9 | 11 | 14 | 15 | kg
Width 123 | 192 | 255 | 310 | 350 cm
Height 225 cm
Versions Straight and Curved
Media Front 67x225, back 81x225, ends 67x225
Acc. LED-spotlight



Product	Price
Pop Up S10, 1x3 Curved	790
Pop Up S10, 2x3 Curved	1 059
Pop Up S10, 3x3 Curved	1 328
Pop Up S10, 4x3 Curved	1 597
Pop Up S10, 5x3 Curved	1 834

Printed on scratch-resistant panels with block out

Pop Up S10

1x3 | 2x3 | 3x3 | 4x3 | 5x3



Panel measurement curved	1X3	2X3	3X3	4X3	5X3
- front, 67 x 225 cm	1 st	2 st	3 st	4 st	5 st
- corner, 67 x 225 cm	2 st	2 st	2 st	2 st	2 st
Double sided					
- backside, 81 x 225 cm	1 st	2 st	3 st	4 st	5 st

Panel measurement straight	1X3	2X3	3X3	4X3	5X3
- front, 73,2 x 225 cm	1 st	2 st	3 st	4 st	5 st
- corner, 67 x 225 cm	2 st	2 st	2 st	2 st	2 st
Double sided					
- backside, 73,2 x 225 cm	1 st	2 st	3 st	4 st	5 st

