



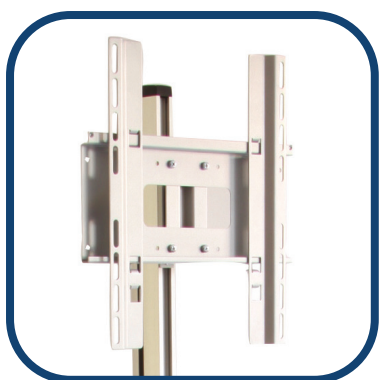
Monitor Stand



Structure for integrating a monitor in many of the Spennare displays. Universal bracket that holds up to 30 kg. Use it stand alone or integrated in a Pop Up or Flextile wall.

Integrated or freestanding
Stable
Adjustable height

Max load 30kg or 42"
Length 1800 mm
Weight 20 kg
Swivel/Tilt The screen can be tilted approx $+12^{\circ}/-3^{\circ}$ and swiveled approx $\pm 45^{\circ}$.
Standard VESA: 75x75 | 100x100
200x100 | 200x200 | 400x200 mm
and screens with max hole pattern 420x330 mm



Monitor Stand	Price
Monitor Stand	621
Nylonväska Monitor Stand	82